

INFORMATION BOOK

The information contained within this information package remains the sole intellectual property of Grant Lamont T/AS Another Room. All uses of this information other than in connection with Another Room products is expressly PROHIBITED with out consent of Another Room. Copying of information for consent authority purposes or in connection of sales of Another Room products is permitted.

ANOTHER ROOM

PH/FAX 02 44 740 393 MOB. 0428 632247
GRANT LAMONT P.O BOX 647 MORUYA NSW 2537

BUILDING SPECIFICATIONS

BUILDING SKID CONSISTS OF TWO HIGH QUALITY GALVANIZED CHANNELS WITH GALVANIZED BOX SECTION FLOORING JOISTS FULLY WELDED AND CORROSION PROTECTED BRACED FOR STRUCTURAL INTEGRITY DESIGN FOR STRENGTH, LONG LIFE AND NUMEROUS RELOCATION'S.

FLOOR CONSISTS OF 22 MM THICK PARTICLE FLOOR SHEETS SCREWED TO FLOOR JOISTS INSTALLED UP INSIDE OF BUILDING PANELS TO GUARANTEE WEATHER PROOFING

BUILDINGS ARE CONSTRUCTED FROM HIGH QUALITY PANELEX PANELS (CRP PANEL) UTILIZING THEIR EXCELLENT THERMAL AND NOISE INSULATION PROPERTIES TO CREATE A CONTROLLED ENVIRONMENT. PANELEX PANELS ARE AN AUSTRALIAN MADE PRODUCT UTILIZING THE BEST TECHNOLOGIES AND HIGH QUALITY ANTICORROSIVE BLUE SCOPE STEEL COLOR BOND SHEETING DEVELOPED FOR ARDUOUS INDUSTRY CONDITIONS.

PANELEX PANELS ARE FLAME RETARDENT AND HAVE BEEN TESTED BY CSIRO TO BE LESS TOXIC THAN NORMAL CONSTRUCTION METHODS DURING COMBUSTION. THEY HAVE NO NUTRIENT VALUE AND DO NOT SUPPORT BACTERIAL GROWTH, ATTRACT ANTS, TERMITE OR RODENTS

PANELS ARE AVAILABLE IN 3 STANDARD COLORS (OTHERS AVAILABLE AT SPECIAL REQUEST) SURFMIST/SURFMIST
PALE EUCALYPT (MIST GREEN)/SURFMIST PAPERBARK(MERINO)/SURFMIST

BUILDING IS OVER ROOFED WITH COLOR BOND CORRUGATED ROOFING , FITTED WITH GUTTERS AND DRAINPIPES IN YOUR CHOICE OF COLORS FROM THE AVAILABLE BLUE SCOPE COLOUR MATRIX FOR COLOR BOND WITH A 5 DEGREE PITCH.

BUILDINGS FITTED WITH HIGH QUALITY SLIDING WINDOWS AND DOORS AVAILABLE IN YOUR CHOICE OF COLOUR AS PER COLOR BOND COLOURS (OPTIONAL PANEL DOORS AVAILABLE)

AVAILABLE WITH CHOICE OF LINO, CARPET OR CARPET WITH LINO INSERT

BUILDING IS ENTIRELY PRE WIRED REQUIRING ONLY SITE CONNECTION BY QUALIFIED ELECTRICIAN INCLUDING SAFETY SWITCHES, POWER POINTS, LIGHTS ETC., PRE WIRED FOR AIR CONDITIONING UNITS.

ANOTHER ROOM

PH/FAX 02 44 740 393 MOB. 0428 632247
GRANT LAMONT P.O BOX 647 MORUYA NSW 2537

ENGINEERED WIND CATEGORY RATING OF CATEGORY 2 (160 KM/HR PLUS (MUST BE INSTALLED AS PER RECOMMENDED FOOTING SPECIFICATIONS)

WINDOWS AND DOOR LAYOUT MAY BE LOCATED TO SUIT ALL REQUIREMENTS DUE TO TYPE OF PANEL CONSTRUCTION

BUILDING BENEFITS

MINIMAL INTERRUPTION TO HOME LIFE DURING INSTALLATION

EASILY INSTALLED BY ANY COMPETENT PERSON

EASILY REMOVABLE AND RE SALE ABLE

SIMPLE ANCHORING DESIGN

WEATHER PROOF

EXCELLENT THERMAL AND NOISE PROPERTIES

COST EFFECTIVE (PARTICULARLY WITH RESALE VALUE)

AESTHETICALLY PLEASING

EASILY ADAPTED OR DECORATED TO SUIT ALL TASTES/NEEDS

FULLY WIRED REQUIRING A SIMPLE ELECTRICAL CONNECTION

EASE OF DELIVERY AND INSTALLATION AS DESIGNED TO TRANSPORT ON TILT TRAYS OR TRUCK AND CRANE AS NECESSARY

EXTREMELY LITE CONSIDERING STRENGTH AND SIZE

MANUFACTURED USING THE BEST QUALITY PRODUCTS

FULL INFORMATION PACKAGE TO ASSIST WITH COUNCIL REQUIREMENTS

FITTED WITH DOWN PIPES

ANOTHER ROOM

PH/FAX 02 44 740 393 MOB. 0428 632247
GRANT LAMONT P.O BOX 647 MORUYA NSW 2537

PANELEX CRP PANEL

TECHNICAL SPECIFICATIONS

GENERAL

Standard PANELEX insulated panel is manufactured by bonding two skins of 0.6 mm colourbond steel to a core of expanded polystyrene under heat and pressure using a two part thermosetting polyurethane adhesive.

SKINS

Standard PANELEX panel skins are 0.6 mm thick galvabond steel manufactured to AS1397 (Bluescope Steel. Zincform G300 Z275 CB BFC, see enclosed coating specifications), with a coating of surfmist (off-white) colourbond (standard colors also include pale eucalypt(mist green) and paper bark (merino), others available on request) 25 % gloss silicon modified polyester paint. These skins exhibit excellent durability, corrosion resistance and chemical resistance in all but the most aggressive environments including external cladding, piggeries and abattoirs. (see attached data sheets)

CORE

Standard PANELEX panels have a core of virgin "SL" grade **flame retardent** modified Expanded Polystyrene (E.P.S) complying with AS1366 part 3. E.P.S. Is a closed cell, resilient, light weight material with excellent thermal and noise resistance properties, long term stability and low toxicity. As E.P.S. Has no nutrient value it does not support bacterial growth, nor attract ants, termites or rodents.

Investigations by the CSIRO have shown that the combustion products of E.P.S> are less harmful than those of burning wood and other conventional building materials.

ANOTHER ROOM

PH/FAX 02 44 740 393 MOB. 0428 632247
GRANT LAMONT P.O BOX 647 MORUYA NSW 2537

PROPERTIES

TABLE 1 CO EFFICIENT OF THERMAL RESISTANCE - R VALUE

| | | | | | |
|----------------------|------|------|------|------|------|
| PANEL THICKNESS (mm) | 50 | 75 | 100 | 150 | 200 |
| R-Value m2 K/W | 1.32 | 1.97 | 2.63 | 3.95 | 5.26 |

TABLE 2 RECOMMENDED INSULATION PANEL THICKNESS

| | | | | | |
|----------------------|---------|---------|---------|-----------|------------|
| PANEL THICKNESS (mm) | 50 | 75 | 100 | 150 | 200 |
| Temperature range C | 25 to 7 | 10 to 0 | 2 to -6 | -6 to -23 | -23 to -34 |

** figures shown are interior operating temp. based on external ambient temp 35 degrees C

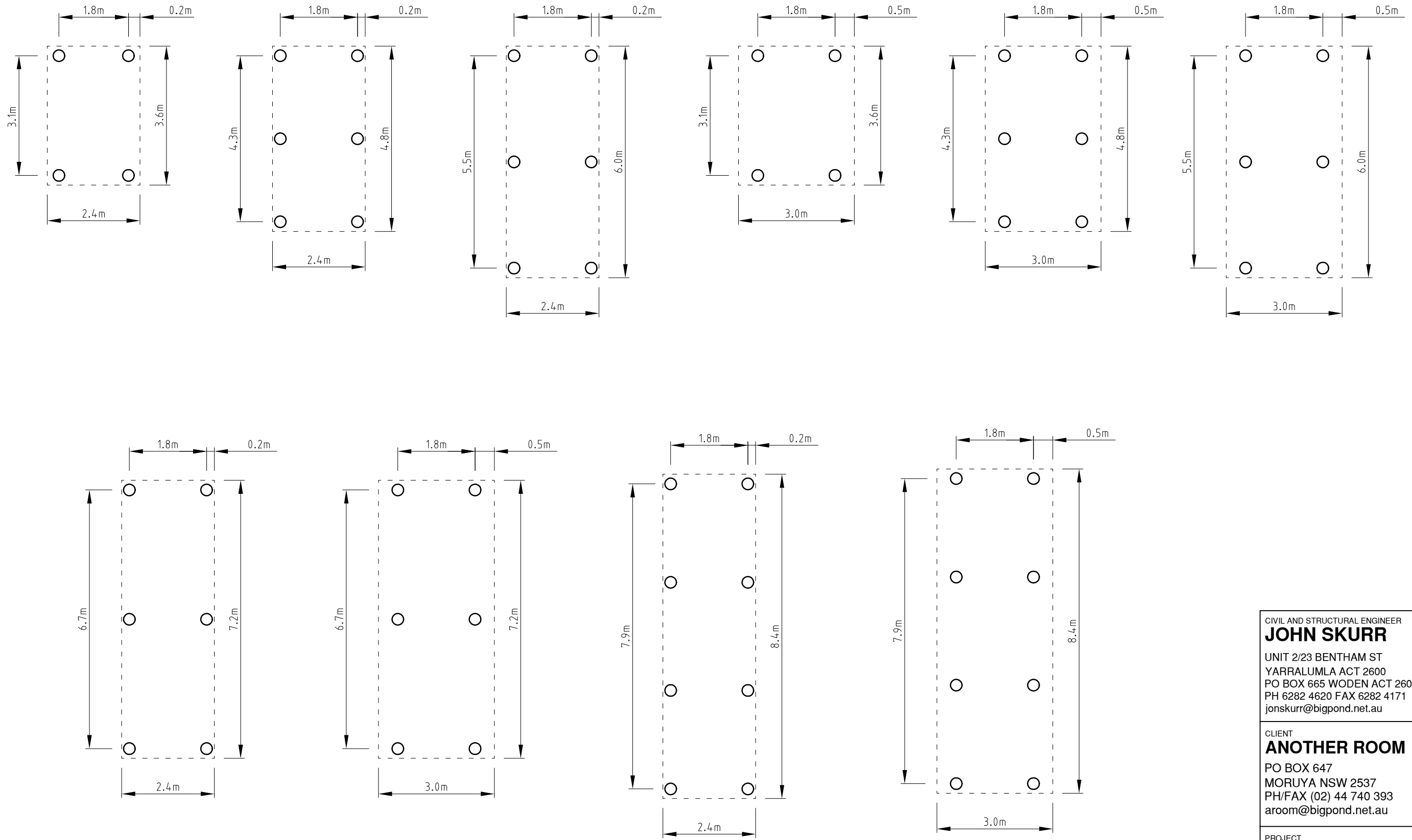
TABLE 3 SPAN TABLE

| Panel thickness | weight Kg/m2 | safe simply supported spans m (sydney 44 m/s) | | | | |
|-----------------|--------------|---|------------|------------|------------|----------|
| | | wall | | roof | | ceilings |
| | | category 3 | category 2 | category 3 | category 2 | (m) |
| 50 | 12 | 4.6 | 3.2 | 3.1 | 2.4 | 3.1 |
| 75 | 12.6 | 5.6 | 3.9 | 4.2 | 2.9 | 4.2 |
| 100 | 13.2 | 6.4 | 4.5 | 5.0 | 3.4 | 5.1 |
| 150 | 14.4 | 7.9 | 5.5 | 6.1 | 4.1 | 6.7 |
| 200 | 15.6 | 9.1 | 6.4 | 7.1 | 4.8 | 7.9 |

SAFE SIMPLY SUPPORTED SPANS FOR PANELEX INSULATED PANEL 0.6 MM

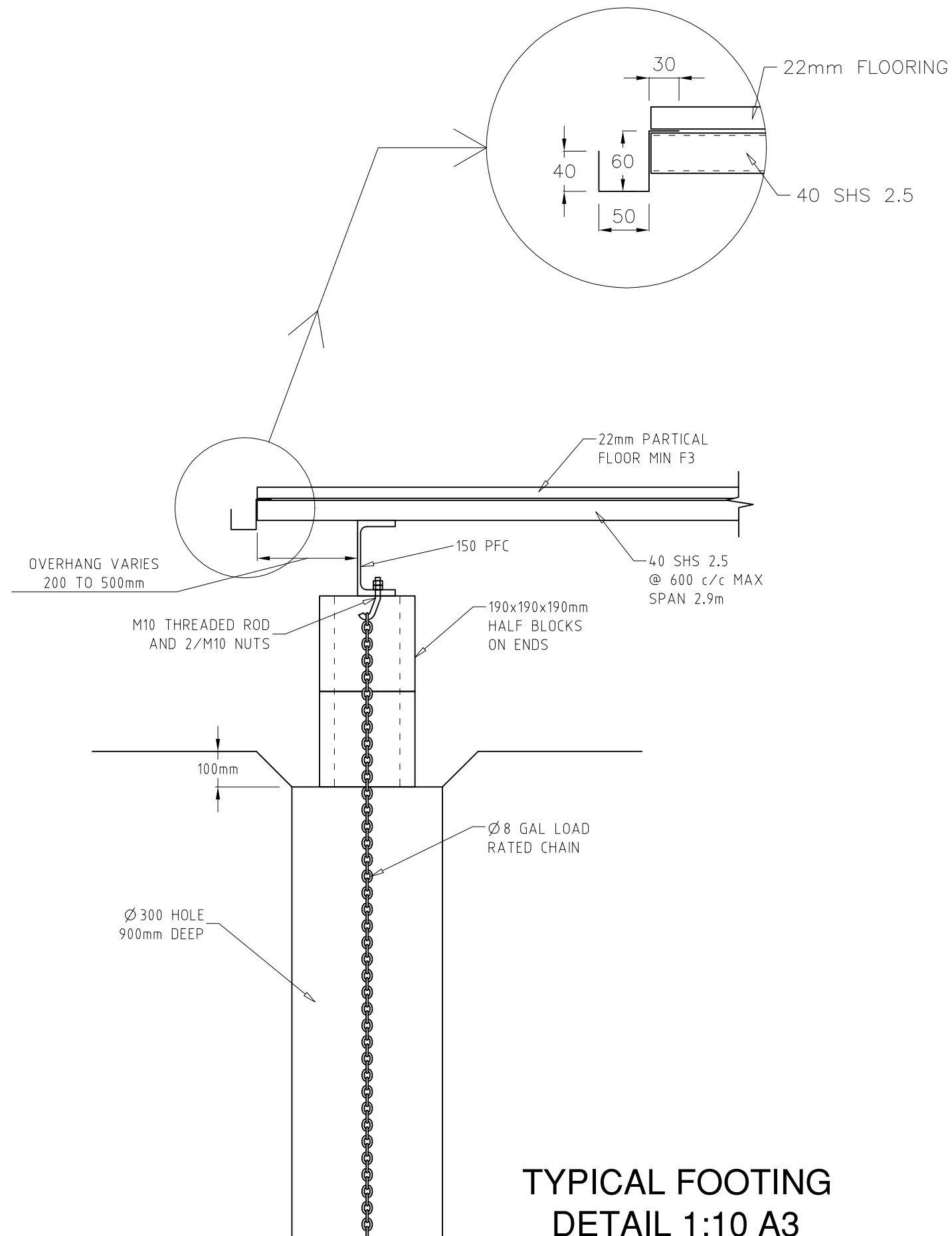
note Spantables are based upon

1. AS117 Opt 1 - non traffic able roofs - live load
 2. AS117 Opt 11 - 44 m/s basic wind velocity- 50 year return period
- 10 mtr high roof - rectangular building , < 10 roof pitch



FOOTING ARRANGEMENT
PLAN 1:100 A3

| | | | |
|---|-------------|---------------------|--------------------------|
| CIVIL AND STRUCTURAL ENGINEER JOHN SKURR UNIT 2/23 BENTHAM ST YARRALUMLA ACT 2600 PO BOX 665 WODEN ACT 2606 PH 6282 4620 FAX 6282 4171 jonskurr@bigpond.net.au | | | |
| CLIENT ANOTHER ROOM PO BOX 647 MORUYA NSW 2537 PH/FAX (02) 44 740 393 aroom@bigpond.net.au | | | |
| PROJECT TRANSPORTABLE FABRICATOR | | | |
| TITLE ARRANGEMENT OF FOOTINGS | | | |
| DESIGNED JS | DRAWN JF | DATE OCT 2004 | DRAWING No. S1 |



GENERAL NOTES

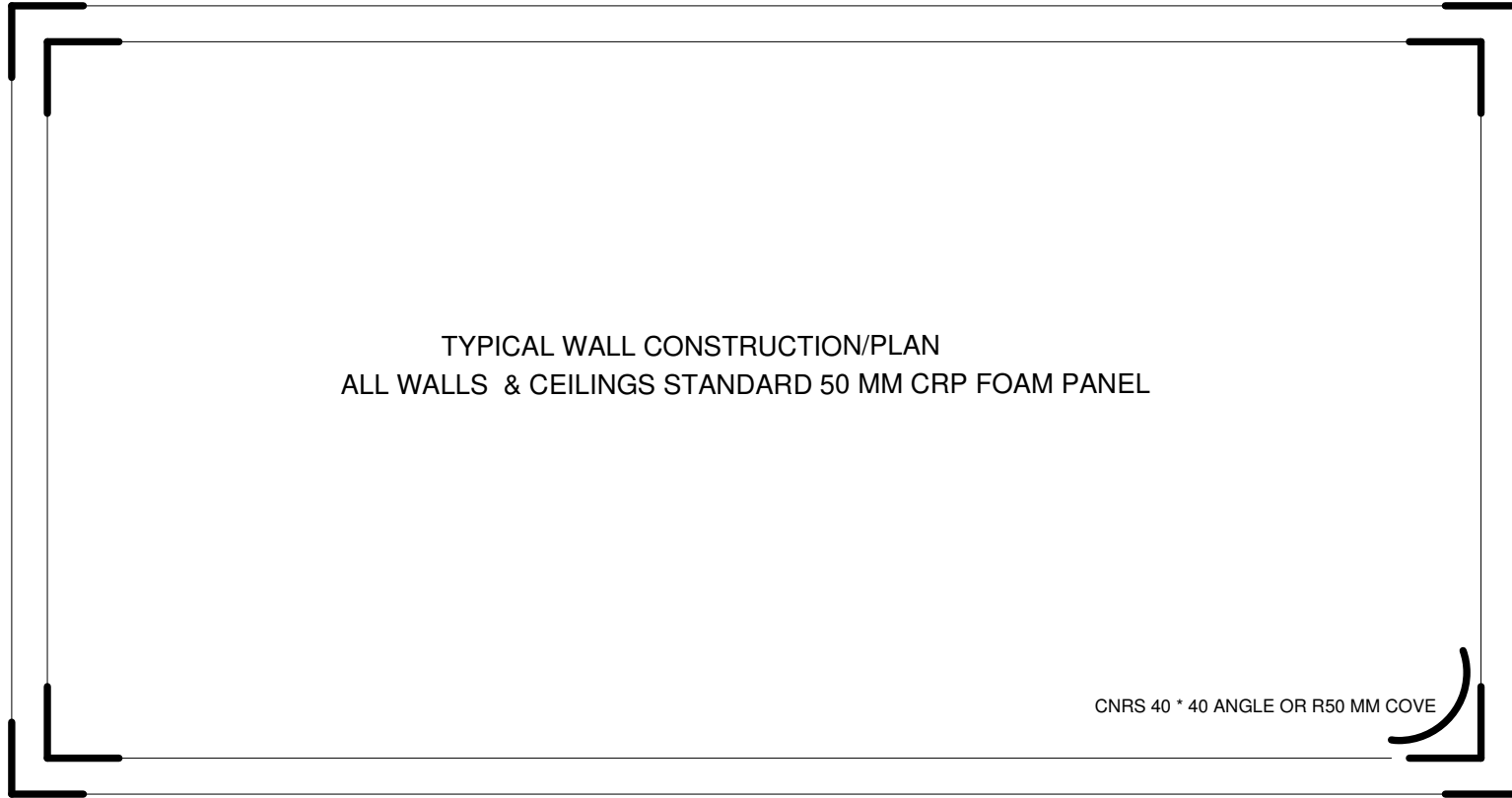
- G1 ALL CONSTRUCTION TO THE BUILDING CODE OF AUSTRALIA, FOR GENERAL CONDITIONS, WORKMANSHIP AND MATERIALS.
- G2 ALL DRAWINGS SHALL BE READ IN CONJUNCTION WITH THE DESIGNERS DRAWINGS. ANY DISCREPANCIES SHALL BE REFERRED TO ANOTHER ROOM PH/FAX (02) 44 740 393
- G3 ALL DIMENSIONS SHALL BE OBTAINED FROM THE DESIGNERS DRAWINGS. MEMBER SIZING AND STRUCTURAL DETAILING SHALL BE OBTAINED FROM THESE STRUCTURAL DRAWINGS
- G4 DURING CONSTRUCTION, THE STRUCTURE SHALL BE MAINTAINED IN A STABLE CONDITION AND NO PART SHALL BE OVERSTRESSED.
- G5 ALL DIMENSIONS ARE IN MILLIMETRES, UNO.
- G6 THE STRUCTURAL WORK SHOWN ON THE DRAWINGS HAS BEEN DESIGNED FOR THE FOLLOWING LOADS.
- LIVE LOADS IN ACCORDANCE WITH AS1170 2002
 FLOORS 2.0KPa AND 2.7kN over 100x100mm
 WIND LOAD CATEGORY 2 TO AS1170.2 OR CLASSIFICATION N3 TO AS1684
 I.E. $V_u=50\text{m/s}$, $V_p=41\text{m/s}$, $V_s=32\text{m/s}$
- G7 THE INSTALLER SHALL BE RESPONSIBLE FOR LOCATING ALL UNDER GROUND SERVICES PRIOR TO EXCAVATION.
- G8 ALL HANDRAILS WHERE THE DROP IS MORE THAN 1m SHALL BE A MINIMUM OF 1000mm HIGH WITH MAXIMUM 125mm SPACES TO BUILDING CODE OF AUSTRALIA AND STRONG ENOUGH TO WITHSTAND 0.75KN/m UDL AND 0.6KN POINT LOAD IN ANY DIRECTION TO AS1170.1 AND 1.5KN/sq.m. WIND LOAD.
- G9 THE INSTALLER IS RESPONSIBLE FOR INSTALLATION FOR ANY ADDITIONAL TERMITE PROTECTION NOT SHOWN ON THE DRAWINGS TO AS3660.

CONCRETE NOTES

- C1 ALL WORKMANSHIP AND MATERIALS SHALL BE IN ACCORDANCE WITH AS 3600.
- C2 CONCRETE SHALL BE TO AS3600:
 GRADE N20 FOOTINGS
 MAXIMUM AGG. SIZE 20mm WITH MINIMUM CEMENT CONTENT 300 kg/m³. CONCRETE FILLING FOR HOLLOW STEEL COLUMNS AND BLOCK CORE FILLING SHALL BE 1 : 0.25 : 4 BLOCK MORTAR OR N20 CONCRETE MAXIMUM AGGREGATE SIZE 10mm
- C3 NO ADMIXTURES INCLUDING FLYASH OR SLAG ARE TO BE USED
- C4 VIBRATORS SHALL BE USED WHEN PLACING FOOTING CONCRETE.
- C5 ALL SERVICES IN THE FOOTINGS SHALL EITHER BE PLACED UNDER THE FOOTINGS AT RIGHT ANGLES OR HORIZONTALLY AND AT RIGHT ANGLES IN THE FOOTING MIDDLE THIRD TO AS2870.

| | | | |
|---|-------------|---------------------|--------------------------|
| CIVIL AND STRUCTURAL ENGINEER JOHN SKURR | | | |
| UNIT 2/23 BENTHAM ST YARRALUMLA ACT 2600 PO BOX 665 WODEN ACT 2606 PH 6282 4620 FAX 6282 4171 jonskurr@bigpond.net.au | | | |
| CLIENT ANOTHER ROOM | | | |
| PO BOX 647 MORUYA NSW 2537 PH/FAX (02) 44 740 393 aroom@bigpond.net.au | | | |
| PROJECT TRANSPORTABLE FABRICATOR | | | |
| TITLE NOTES AND STRUCTURAL DETAILS | | | |
| DESIGNED JS | DRAWN JF | DATE OCT 2004 | DRAWING No. S2 |

MARK POSITIONS OF DOORS/WINDOWS/ROLLERDOORS. WINDOW HEIGHTS IF NOT STANDARD



TYPICAL WALL CONSTRUCTION/PLAN
ALL WALLS & CEILINGS STANDARD 50 MM CRP FOAM PANEL

CNRS 40 * 40 ANGLE OR R50 MM COVE

EXTENAL CNRS 40 * 40 ANGLE

BUILDING SIZE

MANUFACTURER
ANOTHER ROOM P/L

PO BOX 647 MORUYA, NSW 2537
PH/FAX 02 44 740393 MOBILE 0428 632 247

CLIENT NAME:
WE AUTHORISE THIS CONFIGURATION.

CLIENT: SIGNATURE

DATE

SALES SIGNATURE

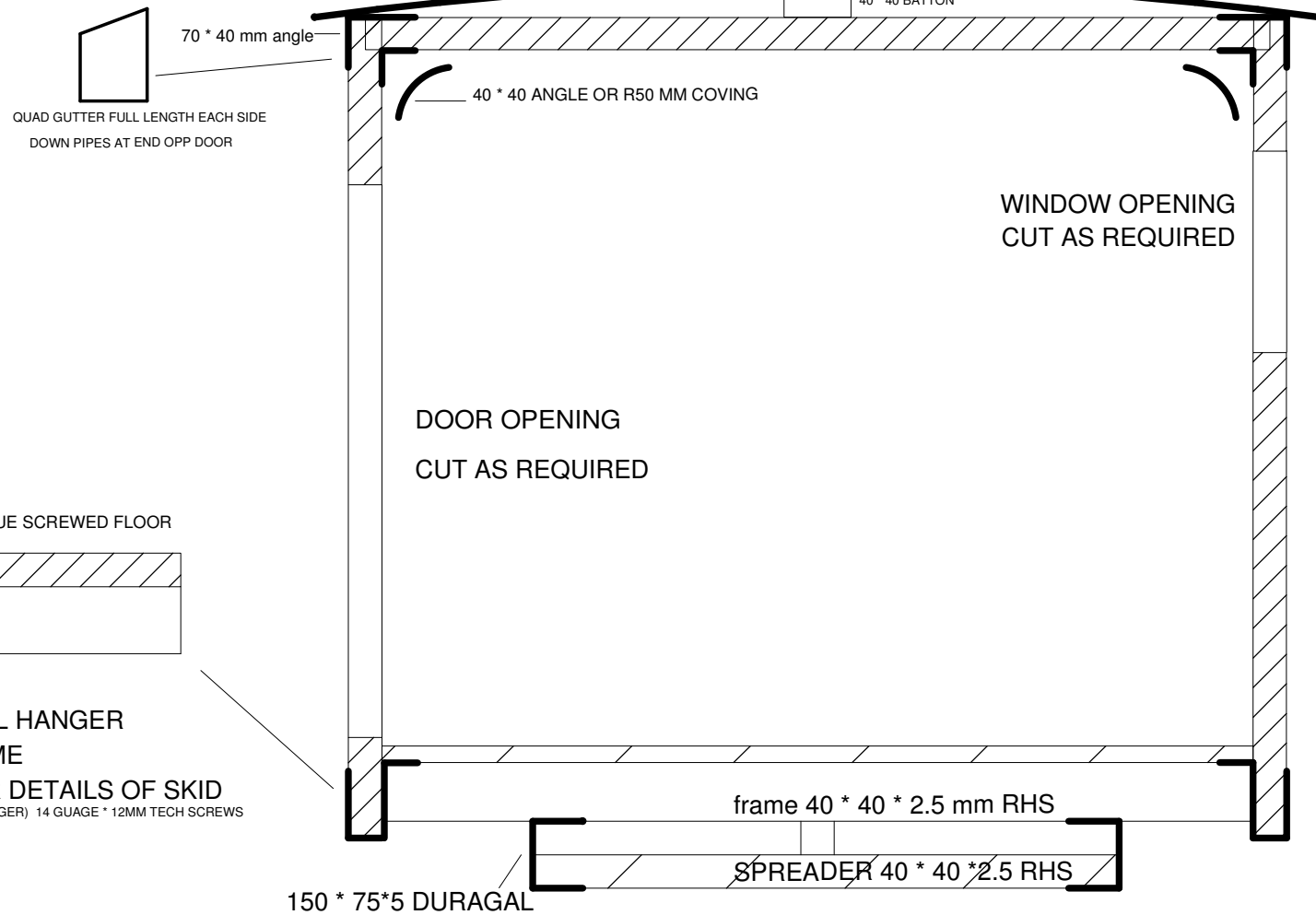
PROJECT PORTABLE PANEL BUILDINGS

TITLE CONTRACT PART 2
POSITIONS OF PENETRATIONS

| | | | |
|-------------|--------------|----------|--------|
| SCALE N.T.S | DRAWN BY G.L | SHEET OF | DWG No |
|-------------|--------------|----------|--------|

| | | | |
|------|----------|--------|----------|
| DATE | CHCKD GL | JOB No | AS BUILT |
|------|----------|--------|----------|

COLORBOND CORRUGATED PITCH APPROX 5 DEGREES



MANUFACTURER
ANOTHER ROOM P/L

PO BOX 647 MORUYA, NSW 2537
PH/FAX 02 44 740393 MOBILE 0428 632 247

CLIENT:

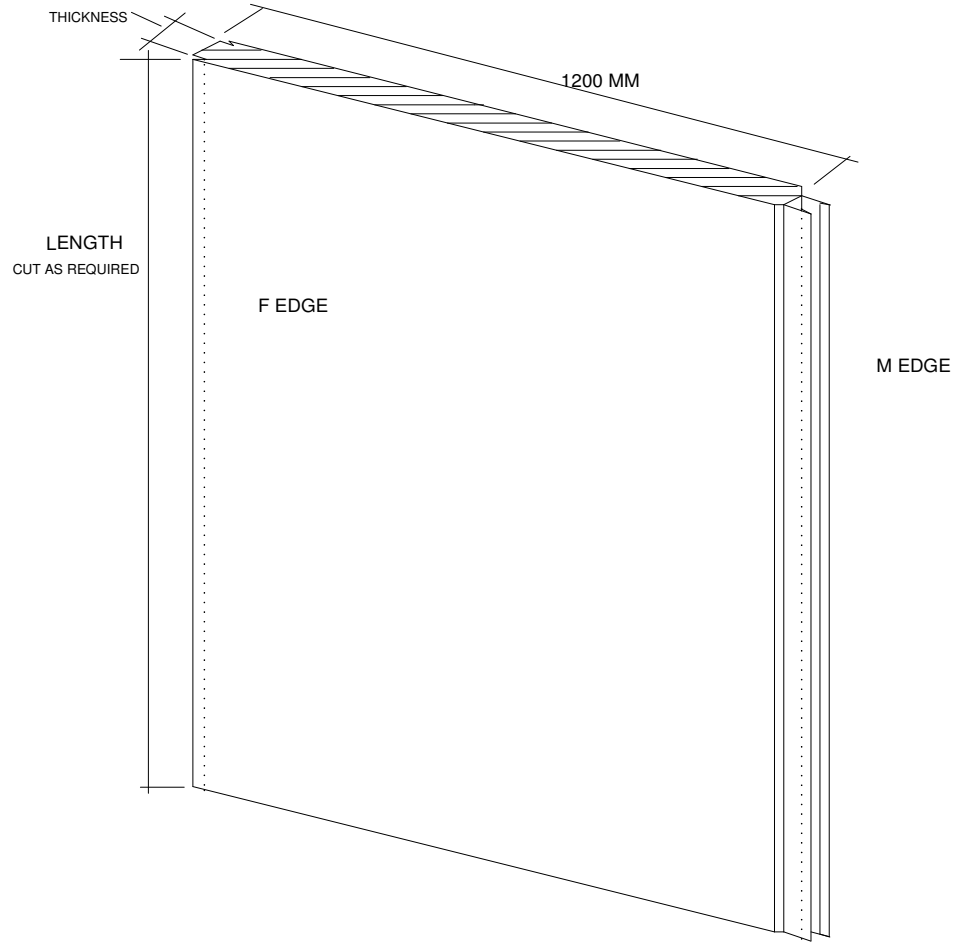
PROJECT PORTABLE PANEL BUILDINGS

TITLE TYPICAL ASSEMBLY DWG

| | | | |
|-------------|--------------|----------|--------|
| SCALE N.T.S | DRAWN BY G.L | SHEET OF | DWG No |
|-------------|--------------|----------|--------|

| | | | |
|------|----------|--------|----------|
| DATE | CHCKD GL | JOB No | AS BUILT |
|------|----------|--------|----------|

BUILDING STANDARD 50 MM THICKNESS.
 AVAILABLE 50MM, 75 MM, 100MM, 150 MM, 200MM ON REQUEST



STANDARD PANELEX CRP FOAM CORE PANEL

MANUFACTURER
 ANOTHER ROOM P/L

PO BOX 647 MORUYA, NSW 2537
 PH/FAX 02 44 740393 MOBILE 0428 632 247

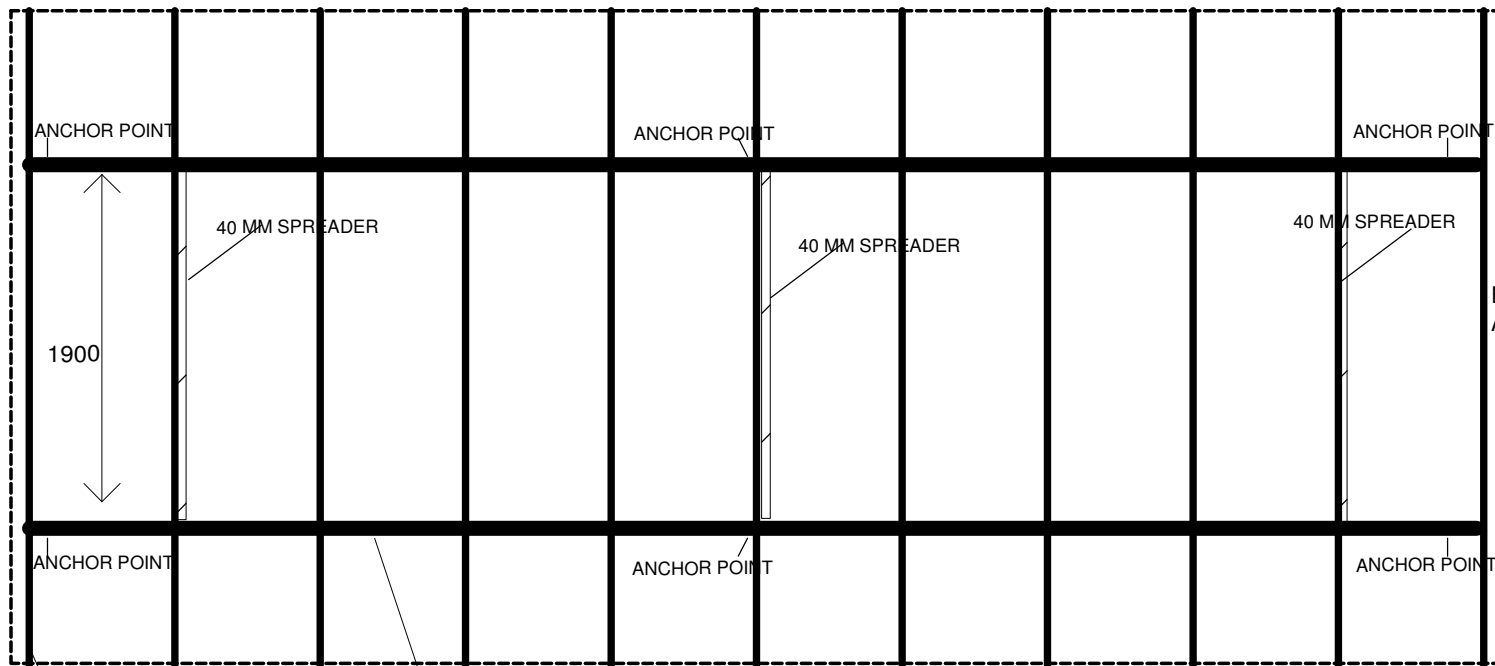
CLIENT:

PROJECT PORTABLE PANEL BUILDINGS

TITLE TYPICAL ASSEMBLY DWG

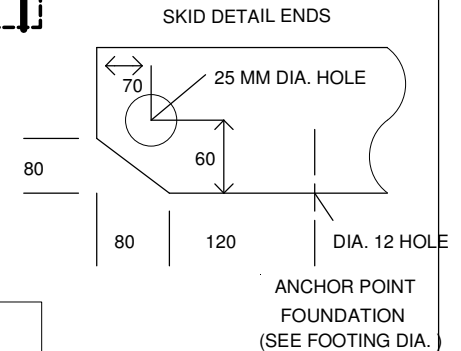
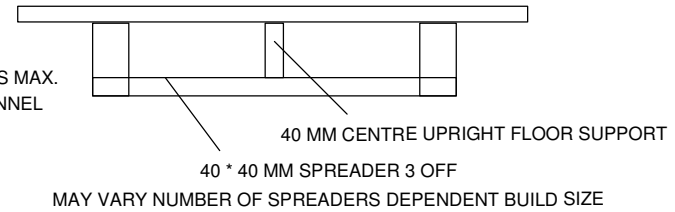
| | | | |
|-------------|--------------|----------|--------|
| SCALE N.T.S | DRAWN BY G.L | SHEET OF | DWG No |
|-------------|--------------|----------|--------|

| | | | |
|------|----------|--------|----------|
| DATE | CHCKD GL | JOB No | AS BUILT |
|------|----------|--------|----------|



- MATERIALS**
- FLOOR TRUSSES
40 * 40 * 2.5 MM GAL RHS
 - SKID RAILS
150 * 75 * 5MM DURAGAL CHANNELS
 - SPREADER RAILS BOTTOM SKID
40 * 40 * 2.5 MM GAL RHS
 - FLOOR UPRIGHTS BETWEEN SPREADER AND FLOOR TRUSS CENTRALISED
3 * APP 100MM 40 * 40 * 2.5 RHS

546 BETWEEN RAILS (586 CENTRE TO CENTRE)
DISTANCE MAY VARY SLIGHTLY DEPENDENT ON BUILD SIZE 600 CENTRES MAX.
40 * 40 * 2.5 GAL RHS 150 * 75 * 5 MM DURAGAL CHANNEL



GAL WALL HANG BRACKET FULL PERIMETER
WELDED TO 40 MM FLOOR SUPPORTS ALL CONTACT POINTS



HANGER AROUND BUILDING PERIMETRE 1.6 MM GALVANISED STEEL

| | | | | | | |
|---|-----------------------|--|----------|-------|----|--------|
| <p>MANUFACTURER ANOTHER ROOM</p> <p>P.O BOX 647 MORUYA NSW 2537 PH/FAX 02 44 740393 MOBILE 0428 632247</p> | <p>CLIENT:</p> | <p>PROJECT PORTABLE PANEL BUILDINGS</p> | | | | |
| | | <p>TITLE TYPICAL SKID DWG.</p> | | | | |
| | | SCALE | DRAWN BY | SHEET | OF | DWG No |
| | | N.T.S | G.L | | | |
| DATE | CHCKD | JOB No | AS BUILT | | | |
| | GL | | | | | |